

## A complete drafting environment

- Powerful and affordable CAD
- Linked dimensioning
- Supports DWG, DXF and MacDraft file formats

# Microspot PC Draft 5.0

Powerful 2D design, drafting and technical illustration in one easy-to-use, affordable package.

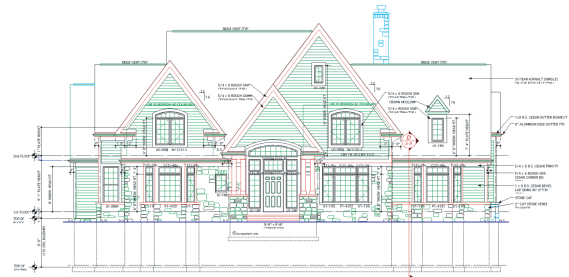
Designed for CAD users of all levels, Microspot PC Draft offers a full complement of drawing tools as well as both ANSI and international standard dimensioning capabilities. Its multi-layered, scaled drawing environment supports both feet/inches and metric dimensions. In addition, Microspot PC Draft offers linked dimensioning to automatically update dimensions as you modify components.

Perfect for producing simple sketches or complex drawings, Microspot PC Draft is excellent for mechanical, architectural and engineering design, as well as for technical illustration. If you frequently work with AutoCAD files, Microspot PC Draft offers compatibility with AutoCAD and other programs supporting DWG/DXF.

If you have never worked with a drafting program before, you will appreciate PC Draft's ease of use, which allows you to quickly create professional-quality drawings. Features are designed with the user in mind and rival those of much more expensive CAD programs.

### Microspot PC Draft's AutoCAD/DWG compatibility.

Microspot PC Draft provides a cost effective solution for reading and working with AutoCAD files on your PC. The conversion capabilities make it easy for AutoCAD users to share files with users of Microspot PC Draft.



Microspot PC Draft is one of few CAD applications that allows this type of conversion and so offers its users a significant advantage. So if you are an experienced or first time user of drafting applications, Microspot PC Draft offers an easy-to-use, inexpensive alternative for DWG conversion.

### Contact Microspot:

Microspot Ltd.  
Concorde House  
10-12 London Road  
Maidstone Kent  
ME16 8QA UK

Tel: +44 (0)1622 687771  
Fax: +44 (0)1622 690801

Email: [sales@microspot.co.uk](mailto:sales@microspot.co.uk)  
Website: [www.microspot.co.uk](http://www.microspot.co.uk)



### The Tool Palette

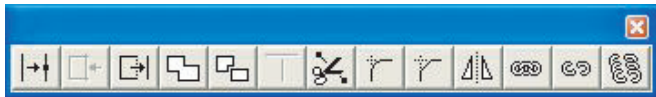


The Tool palette offers a full complement of drawing tools including lines, rectangles, circles, arcs, polygons, curves, parallel line and freehand tools. Parallel line and polygon tools make it easy to create exterior walls. Add interior walls with a mouse click using the parallel extrude tool. Some tools can be configured from the Tool Palette to provide several drawing options. For example, arcs can be drawn by their radius, any 3 points, or as an elliptical arc. There are also special tools to create lines tangent, perpendicular, and parallel to edges. Alternatively, lines can

automatically be drawn from the centre of an object, as well as from the middle or end points of a line or edge of an object.

### The Accessory Palette

The Accessory palette contains editing and object manipulation functions. There are tools to create fillets and chamfers, add points to objects, break objects into their edges, extend lines to their intersections, and automatically trim lines that overlap. PC Draft also provides many advanced tools.



The Attach function lets you join (glue) dissimilar edges together, such as arcs, curves, and lines, to form a solid shape that can then be filled. The Add feature merges objects together to form a single shape, while Subtract lets you cut the surface of one object from another, or use a line to cut an object in two. The Mirror tool is used to create a mirror image of an object, or a copy of the object, about a user defined axis. The Link tool allows you to link objects vertices together so that they move together; use the Unlink or Unlink All tools to unlink them.

### The Dimension Palette

The Dimension palette provides a full set of dimensioning tools that support both feet and inches and metric measurements, and allow you to create linear dimensions in single, chained or baseline modes. There are also tools to create perpendicular, radial and angular dimensions. Dimension formats provide text position, tolerances, round off, witness lines, arrow position, and much more.



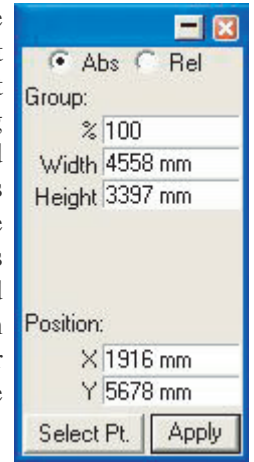
### The Attributes Palette

The Attributes palette provides options to change the appearance of objects by specifying the fill attributes (fill patterns and colours for objects and parallel lines) and pen attributes (colour, pattern, line weight, end marks, and line style). Set the default attributes to be used for all new objects, or select an existing object to change its attributes.



### The Resize Palette

The Resize palette displays the size of an object. When you select an object, its unique measurement parameters are displayed. Using the keyboard, you can quickly and precisely edit any of the object's measurements to a new absolute value, or a new value relative to its current size; the object is resized instantly. The Resize palette can also be used to move objects or vertices to new absolute or relative positions.



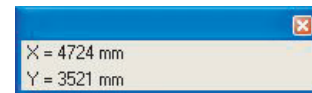
### The Alignment Palette

The Alignment palette provides tools for you to quickly and easily line objects up with each other or distributing objects along a line.



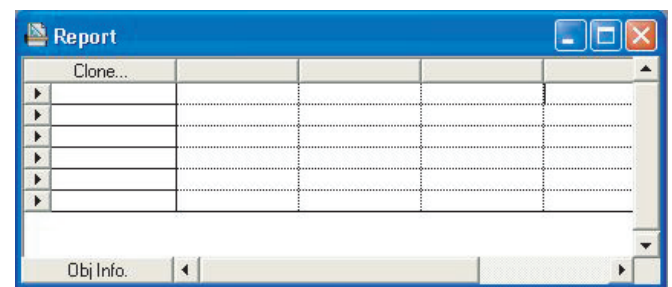
### The Show Size Palette

The Show Size palette makes it easier to draw objects precisely because it provides a continuous readout of an object's size as you draw or resize it. It also displays the degree of rotation as you rotate objects.



### PC Draft's Integrated Database

Although a picture may be worth a thousand words, sometimes that's just not good enough. Often, you may want to extract information from your drawing in the form of a report, like a Bill of Materials, or maybe you need a report that details the properties of objects in your drawing, such as their perimeter, area, length, or other measurements.



PC Draft's database features let you quickly and easily assign information to objects, perform Find/Replace operations, and create custom reports. Its report functions allow you to extract important information from your drawing, such as area, count, height, width, length, and perimeter. Reports can be displayed on screen to show the current status of your drawing or as a preview before printing the final output. Because PC Draft's database is integrated, changes made to the drawing will be updated in the report.

# Summary of Features

## The Drawing Environment

- Fully scaled environment: Select scale in feet/inches or metric units
- Show size: Displays sizes of objects to scale, in real-world units
- Layers: Show, hide, print and assign scales to each layer
- Rulers: Display standard or scaled; user-definable zero origin
- Zoom: Zoom in or out on the entire document or a selection
- Automatic area calculation and display
- Save and recall multiple views per drawing
- Save all user defined settings as the program defaults
- Attribute palette: Provides quick and easy access to object and parallel line fill colours and patterns; line weights, pen colour, line styles and end marks
- Attributes Tool: Quickly copy an object's graphic attributes and/or object information and apply them to another object
- Edit Patterns: Change the fill patterns available

## Drawing Tools

- Constrained and unconstrained lines (snap to grid or along their length)
- Rectangles: Square, rounded or elliptical corners, with dynamic editing
- Circles: By radius, diameter, 3 points, or concentric to existing circle
- rcs: By radius, 3 points, elliptical, or concentric to an existing arc
- Ellipses: By diagonal or centre
- Polygons: Open or closed
- Parallel lines, parallel polylines and parallel polygons
- Regular polygons with user defined number of sides
- Curves: Bezier or spline
- Freehand sketching: Open or closed shapes
- Marker symbol tool
- Create text with fonts and styles, line or paragraph text (with word wrap)

## Linked Dimensioning

- Linear dimensions: Horizontal, vertical and slope (single, chained or baseline modes)
- Perpendicular dimension tool
- Radial dimensions: Diameter and radius
- Angular dimensions: Decimal or fractional degrees
- Circle centre: Circles, arcs and ellipses
- Supports feet and inches and metric units, plus custom standards
- User defined Witness, extension and leader lines and dimension line end marks
- Text position, tolerance (one, two or limits), and round off values
- Dimension labels

## Special Tools To Draw Lines

- Tangent from arc/circle to a point
- Tangent between two arcs or circles
- Perpendicular from an object's edge to a point
- From the midpoint of an object's edge to a point
- From the endpoint of an object's edge to a point
- From the centre of an object to a point
- Offset tool creates lines parallel to straight edges
- Extrude parallel lines from object edges

## Edit and Construction Tools

- Fillet tool: User defined radius; auto or manual trim
- Chamfer: Define chamfer lengths; auto or manual trim
- Trim tool: Cuts lines at their intersection
- Extend lines to their intersection or to a reference plane
- Add or delete handles from straight-edged object or curve
- Smoothing of polygons and freehand shapes
- Break objects into their component parts
- Add objects together to form a single surface
- Subtract the surface of one object from another
- Attach edges together to form a single object that can be filled

- Mirror objects, or copies, about a user defined axis
- Link and Unlink vertices

## Manipulating Objects

- Resize palette: Keyboard editing of object's measurement parameters
- Resize objects to an absolute value, or relative to their current size
- Rotate text and objects: In less than 1 degree increments; around their centres, a point on the drawing, or a reference point on the object itself
- Rotate 90°: Rotate objects clockwise or anti-clockwise 90° with a single mouse click around the object's centre or its datum point
- Linear and Circular duplication of objects
- Object alignment: Multiple alignment options. Align with object, point or grid.
- Distribute objects along a line: By centre or datum point
- Move Command: Keyboard entry for precise location of objects (absolute or relative) on the same layer or to a different layer. Can also create and move copies.
- Select objects by their graphic attributes or object information
- Copy an object's attributes such as fill, line type, etc. and apply them to other objects
- Snap-to: Control points of objects; mid or endpoints of edges; object centres, while drawing or editing of objects

## Other Important Features

- Symbol Library palettes to store commonly used graphic images, with their database information, for use in other drawings
- Variety of line weights, including hairline for lines, and borders
- 15 customisable line styles which can be applied to any object
- Multiple end marks on dimensions, lines, polylines, and curves
- Full colour support plus custom fill colours and patterns
- Slide show function to present your drawing on screen. Each layer can be displayed as a slide, or printed independently
- Nudge feature to move objects 1 pixel at a time using Arrow keys
- Customisable function keys
- On-line manual

## Integrated Data Base Features

- User definable field names for object data
- Assign data (i.e. name, part #, etc.) to objects, groups, and symbols\*
- Find/Replace feature: Find objects by their data and replace them with a different object (find in the active layer, or in all drawing layers)

## Report Function

- Quickly and easily create custom reports
- Enter text for titles, column headings and notes
- Functions include area, count, height, length, perimeter, width and total
- Set search criteria for functions using pop-out menus
- Load report formats from other PC Draft drawings
- Print reports to the screen or to a printer
- Report updates to reflect changes in your drawing
- Export as tab-delimited text files for use with other spreadsheet and database applications

## File Formats

- Save as PC Draft drawings, symbol libraries, or reusable stationery
- Read & write Microspot MacDraft drawings and Symbol Libraries
- Read TIFF and Windows BMP
- Read & write DWG, DXF, PICT, and Enhanced PICT
- Export as JPEG, BMP, Photoshop, TIFF and other standard QuickTime formats.

# Microspot PC Draft 5.0

## System requirements:

- Pentium processor
  - 6 MB free RAM
  - Windows 95 or higher
  - 10 MB free hard disk space
- (PC Draft is fully compatible with Windows 95, 98, 2000, NT and XP)

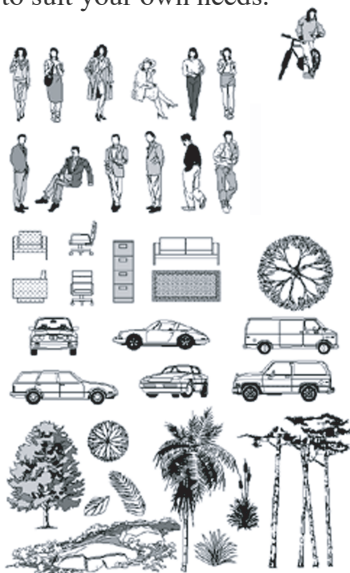
## Pricing:

- Microspot PC Draft 5.0 demo version: free to download from [www.microspot.co.uk](http://www.microspot.co.uk)
  - Microspot PC Draft 5.0 full product: S.R.P. £239.00
  - Microspot PC Draft Symbol Libraries, set of all 5: S.R.P. £75.00
- (All prices exclusive of VAT)

## Microspot PC Draft Symbol Libraries:

Microspot offers five sets of Symbol Libraries. These contain images ready for use in Microspot PC Draft documents, or other applications, and will provide you with many of the elements you need to quickly and easily complete or embellish your drawings.

Each component has been professionally drawn, using vectors rather than bitmaps, providing you with the highest possible quality of printing. Once dropped into a drawing, a symbol can easily be edited to suit your own needs.



Selection from Graphics Volume 1

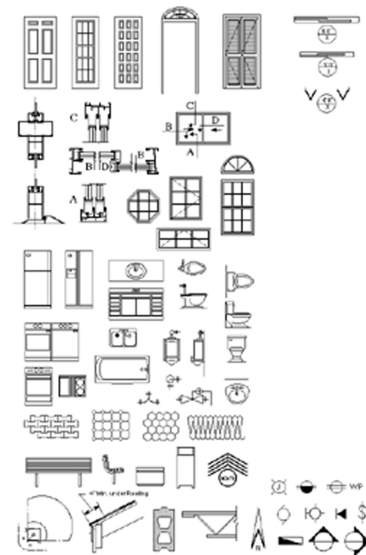
**Graphics Volume 1:** Over 200 images of people, cars, trucks, trees and other landscape elements. This set is ideal for architects, illustrators and designers as well as for general graphics and presentations.

**Graphics Volume 2:** Contains over 200 graphic elements to help you create professional-looking organisational charts, design computer logic diagrams, embellish business charts, or add character to your correspondence and presentations.

**Architecture:** A comprehensive set of over 1100 commonly used symbols for the creation of residential and light commercial construction drawings. These libraries provide architects, engineers and contractors with symbols that address the 16 standard specification formats used in construction drawings.

**Electronic Schematic:** Incorporates over two hundred symbols for a wide array of electronic components and elements used to create schematic diagrams. Included are everything from vacuum tubes to logic gate symbols.

**Graphics Volume 5:** Over 200 images including computers and peripherals, road signs and lights, landscape elements, stars and signs to write on, maps, furniture and installations.



Selection from the Architecture library