

MacDraft Symbol Libraries

Table of Contents

Introduction	I
Librarian	I
Drag and Drop	I
About Symbol Libraries	I
Editing Symbols	II
Libraries Available	II
Graphics Volume 1	II
Graphics Volume 2	II
Architecture	II
Electronic Schematics	II

Architecture

General (Section 1)	A-1
Site Library (Section 2)	A-2
Concrete (Section 3)	A-3
Masonry (Section 4)	
Brick Library	A-4
Concrete Masonry Units (CMU) Library	A-5
Stone Library	A-6
Metal Library (Section 5)	A-7
Wood Library (Section 6)	A-9
Roof/Insulation (Section 7)	A-10
Door and Windows (Section 8)	
Door Libraries	
Hollow Metal Doors	A-11
Store Fronts	A-12

Door Elevations 1'4"-2'6"	A-14
Door Elevations 2'8"-3'0"	A-14
Bifold Doors 2' -7'	A-15
Garage Door Elevations	A-15
Transoms, Sidelights, and Sliding Glass Doors	A-16
Window Libraries	
Window Details	A-17
Double-Hung Windows	A-18
Awning Windows	A-19
Casement Windows	A-19
Horizontal Sliding Windows	A-20
Shaped Windows	A-20
Finishes (Section 9)	A-21
Specialties (Section 10)	A-22
Equipment (Section 11)	A-23
Furnishings (Section 12)	A-25
Special Construction (Section 13)	A-26
Conveying Systems (Section 14)	A-27
Plumbing (Section 15)	
Plumbing - Pipes	A-28
Plumbing - Fixtures	A-28A
Electrical (Section 16)	A-30
Note about the Quick Plans and Quick Elevations Libraries	A-32

Introduction

Microspot offers four series of Microspot Librarian symbol libraries. These are sets of graphic images ready for use in MacDraft® drawings and will provide you with many of the elements you need to quickly and easily complete or embellish your drawings.

Librarian

Librarian is a drag and drop-compatible application for storing and retrieving any type of data, and is included with MacDraft 4.3. It can be used with any application that supports drag and drop (or copy and paste). An unlimited number of libraries can be created, each of which can hold hundreds of items. Custom libraries can contain symbols from different symbol libraries, items and files you have drawn, and files of many other types.

Librarian can be used with MacDraft to hold PICT images of furniture, architectural and electrical components etc. Adding library items to drawings is as simple as dragging and dropping them from the library into the MacDraft document.

See the section Librarian in the MacDraft User Guide Addendum for further details.

Drag and Drop

MacDraft version 4.3 implements drag and drop. This means that any PICT file can be dragged into a MacDraft document window, and objects or group of objects can be dragged from a MacDraft document to, for example, a Librarian file (symbol libraries in the old format are not supported).

Items in image and graphics file formats dragged into MacDraft from Librarian files will be converted into PICT.

See the section Drag And Drop in the MacDraft User Guide Addendum for further details.

About Symbol Libraries

Each library has been professionally drawn, using vectors rather than bitmaps, providing you with the highest possible quality of printing.

Note: The symbols have been optimized for printing on the LaserWriter® and other PostScript® output devices. Other devices, such as inkjet printers, may reduce clarity in the final image.

Editing Symbols

Symbols can be easily edited to suit your own needs:

- Once dropped into a drawing, a symbol can be rotated, flipped, moved, or resized.
- If you ungroup a symbol, you can remove, resize, fill, or otherwise edit any object within it.
- You can ungroup symbols that contain text and substitute your own text.
Note: be careful when resizing symbols that contain text.

Libraries Available

Graphics Volume 1

Over 200 images of people, cars and trucks, and trees and other landscape elements. This set is ideal for architects, illustrators, and designers, as well as for general graphics and presentations.

Graphics Volume 2

Contains over 200 graphic elements to help you create professional-looking organizational charts, design computer logic diagrams, embellish business charts, or add character to your correspondence and presentations.

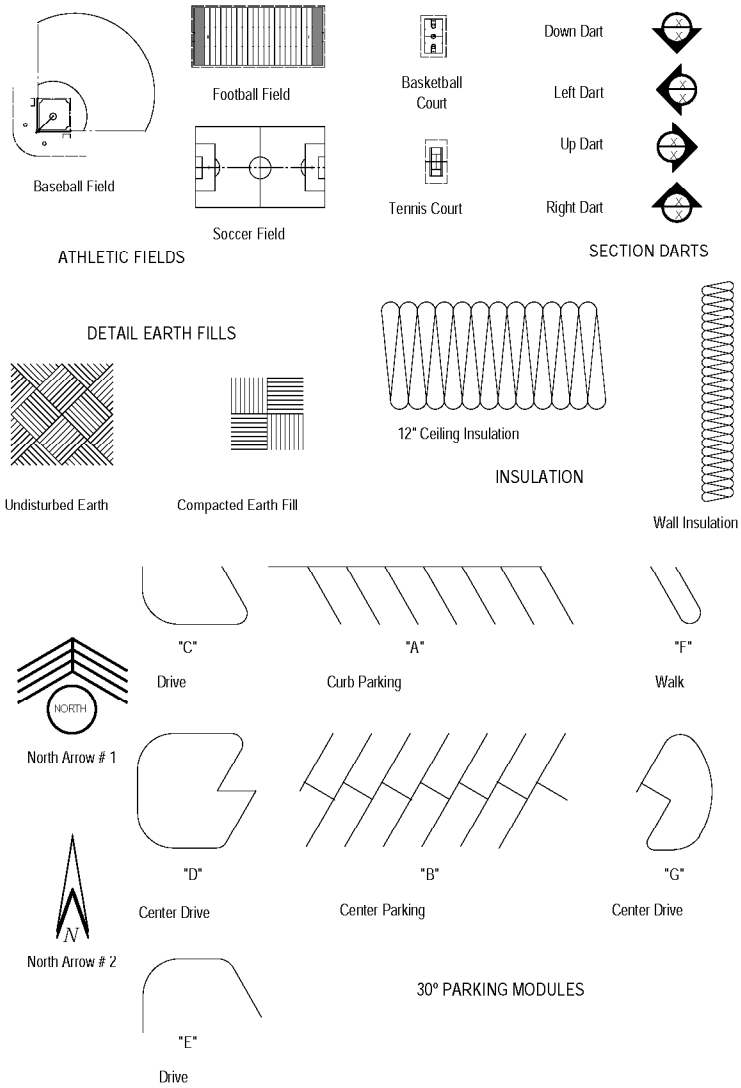
Architecture

A comprehensive set of over 1,100 commonly used symbols for the creation of residential and light commercial construction drawings. This library provides architects, engineers, and contractors with symbols that address the 16 standard specification formats used in construction drawings.

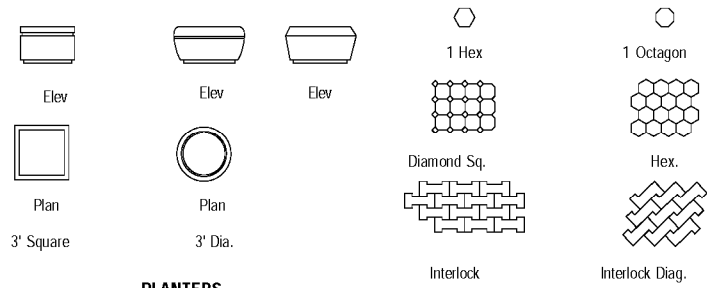
Electronic Schematics

Incorporates over two hundred symbols for a wide array of electronic components and elements used to create schematic diagrams. Included are everything from vacuum tubes to transistors and logic gate symbols.

General Library

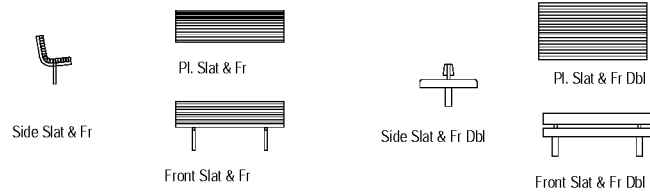


Site Library

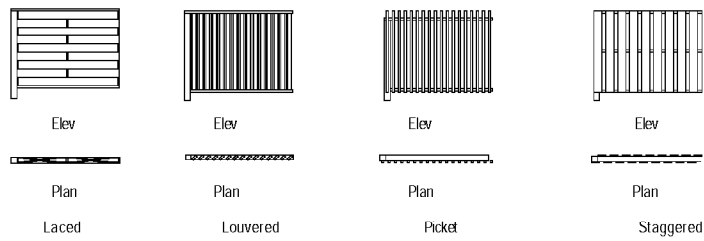


PLANTERS

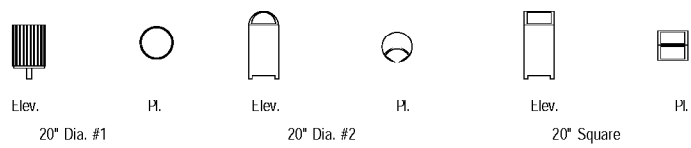
PAVING PATTERNS



BENCHES

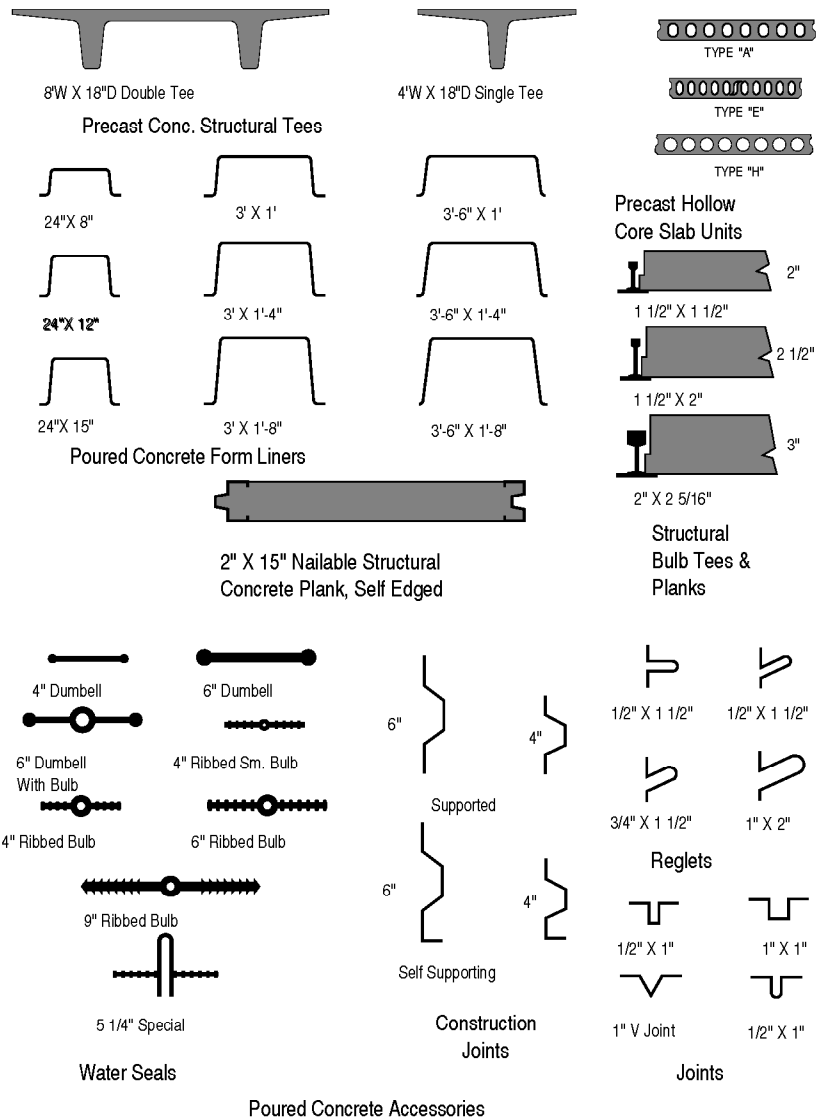


FENCES

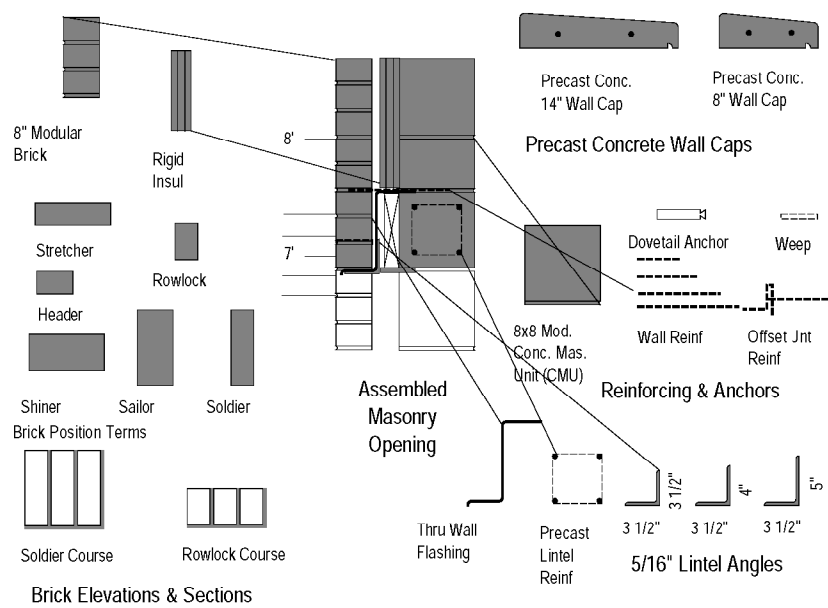


TRASH RECEPTACLES

Concrete Library



Brick Library



STEEL BRICK & MASONRY LINTELS		
CLEAR SPAN	EXTERIOR ANGLES	INTERIOR ANGLES
MAX		
4'-0"	L 3 1/2"x 3 1/2" x 5/16"	2L's 3 1/2" x 3 1/2" x 5/16"
6'-0"	L 4" x 3 1/2" x 5/16"	2L's 4" x 3 1/2" x 5/16"
8'-0"	L 6" x 3 1/2" x 5/16"	2L's 6" x 3 1/2" x 5/16"

Precast Precast Modular Brick

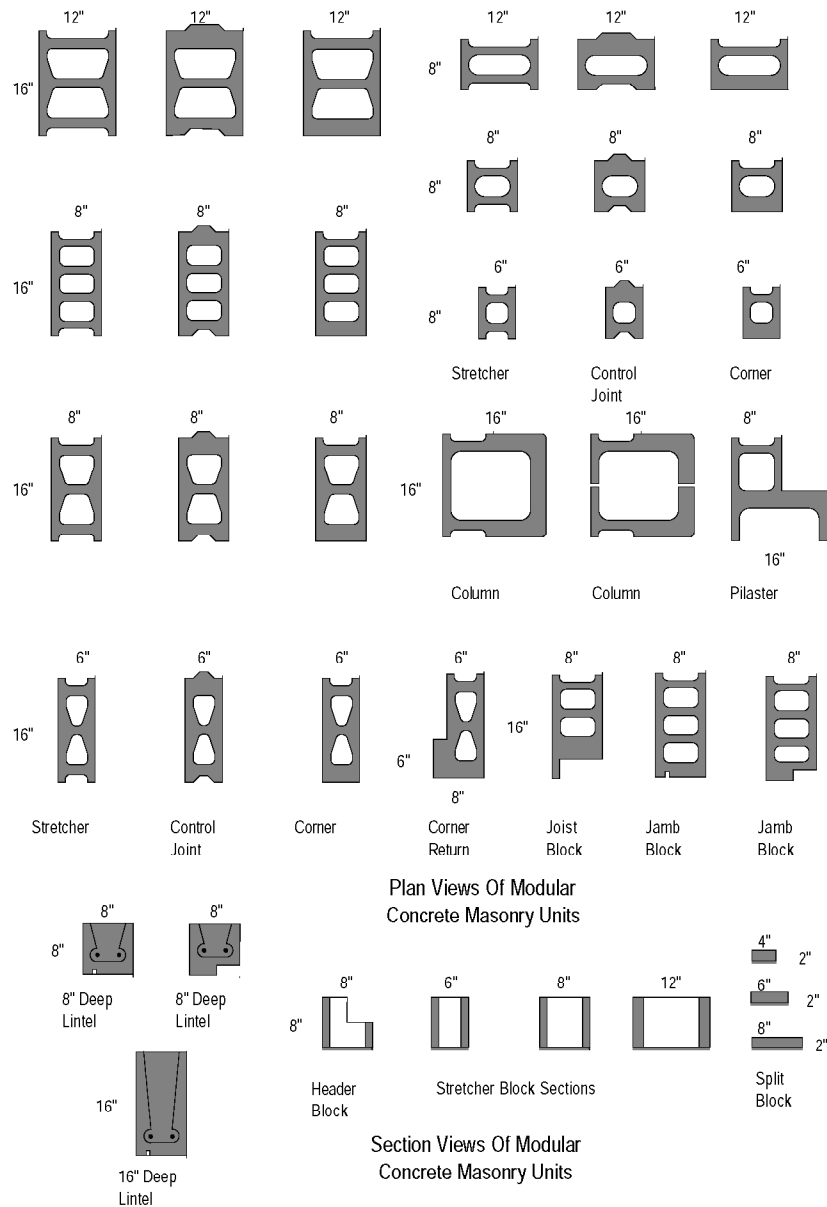
Masonry Window Sills

REINF. LINTEL SCHEDULE			
LINTEL TYPE	SPAN	8" BRK	8" CMU
REINF CONC	4'-0"	4#3	4#3
LINTEL	6'-0"	4#4	4#3
(7 5/8" SQ.)	8'-0"	4#5	4#4
PRECAST CMU	4'-0"	2#4	2#4
(7 5/8" SQ.)	6'-0"	2#5	2#4
	8'-0"	2#6	2#5

8"X8" #1 8"X8" #2

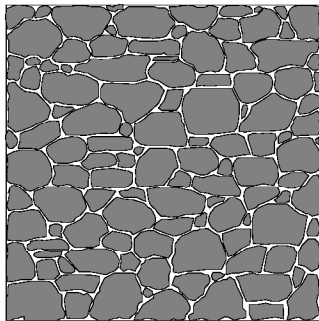
Concrete Reinf.Lintels

Concrete Masonry Units (CMU) Library

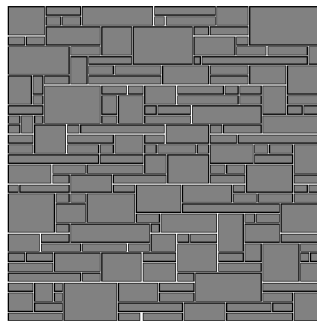


Stone Library

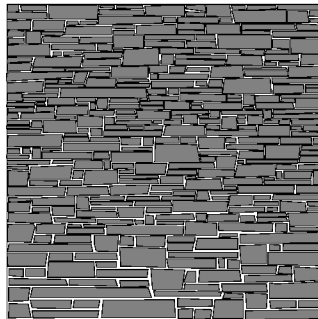
8' X 8' Masonry Wall Elevations



Uncoursed Fieldstone

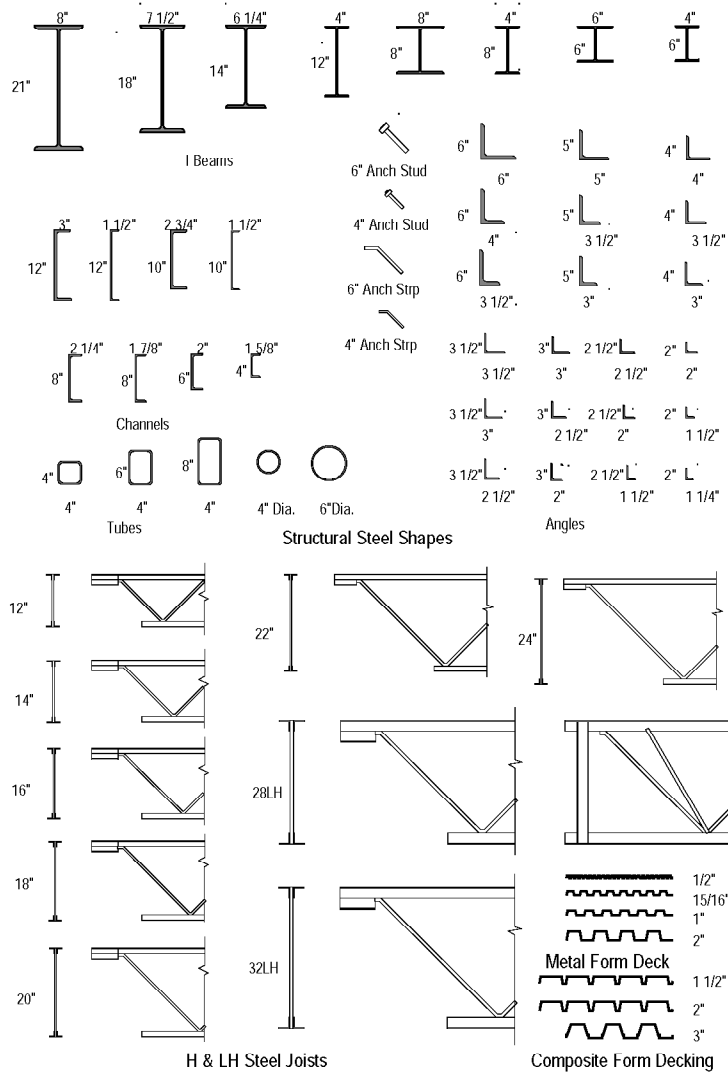


Split Masonry - Four Course Height

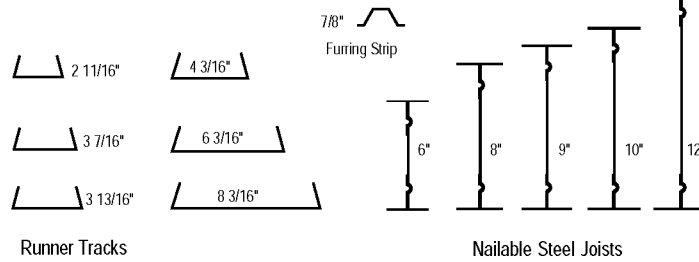
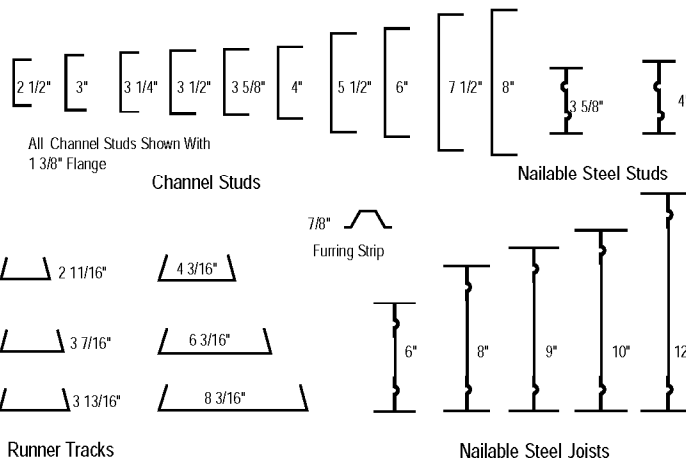
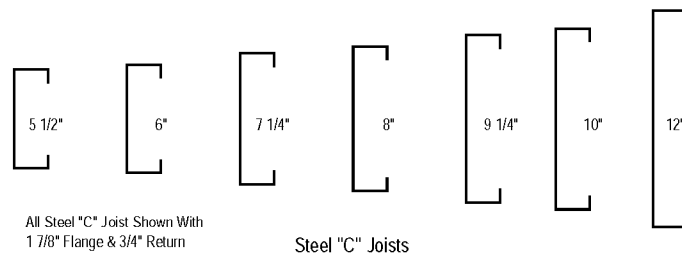
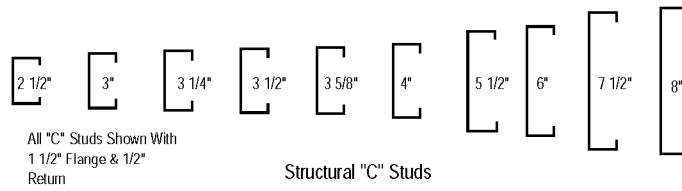


Uncoursed Ledgerrock

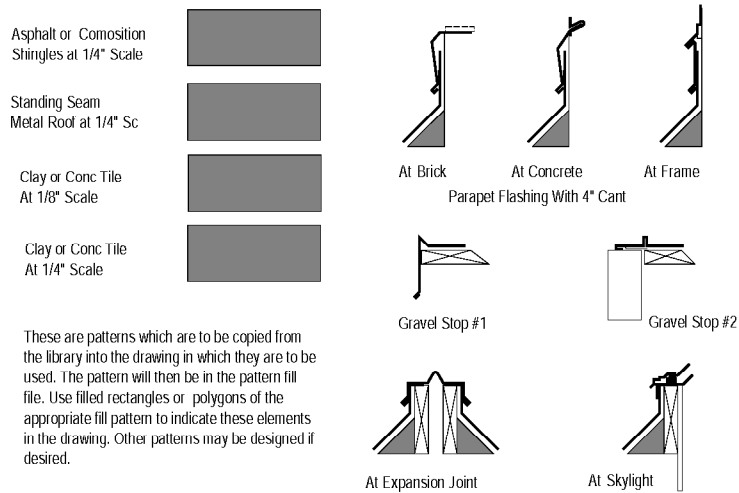
Metal Library



Metal Library (continued)

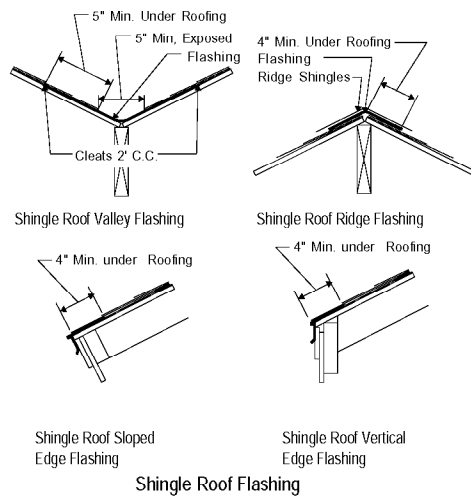


Wood Library

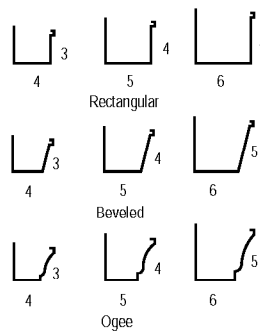


Roofing Elevation Patterns

Built Up Roof Flashing



Note:
Clay & Concrete Tile, Metal And Other Roofing Materials Require Flashing And Details Which Are Specific To The Individual Manufacturers Requirements And Go Beyond The Purposes Of This Library



Gutter Shapes

Roof and Insulation Library

Asphalt or Composition
Shingles at 1/4" Scale



Standing Seam
Metal Roof at 1/4" Sc



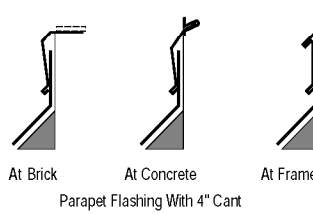
Clay or Conc Tile
At 1/8" Scale



Clay or Conc Tile
At 1/4" Scale



These are patterns which are to be copied from the library into the drawing in which they are to be used. The pattern will then be in the pattern fill file. Use filled rectangles or polygons of the appropriate fill pattern to indicate these elements in the drawing. Other patterns may be designed if desired.



At Brick

At Concrete

At Frame

Parapet Flashing With 4" Cant



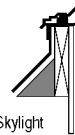
Gravel Stop #1



Gravel Stop #2



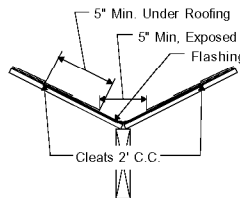
At Expansion Joint



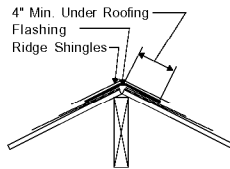
At Skylight

Roofing Elevation Patterns

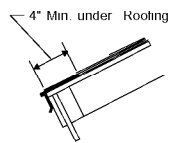
Built Up Roof Flashing



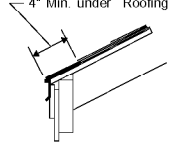
Shingle Roof Valley Flashing



Shingle Roof Ridge Flashing



Shingle Roof Sloped
Edge Flashing

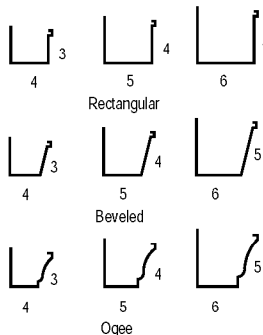


Shingle Roof Vertical
Edge Flashing

Shingle Roof Flashing

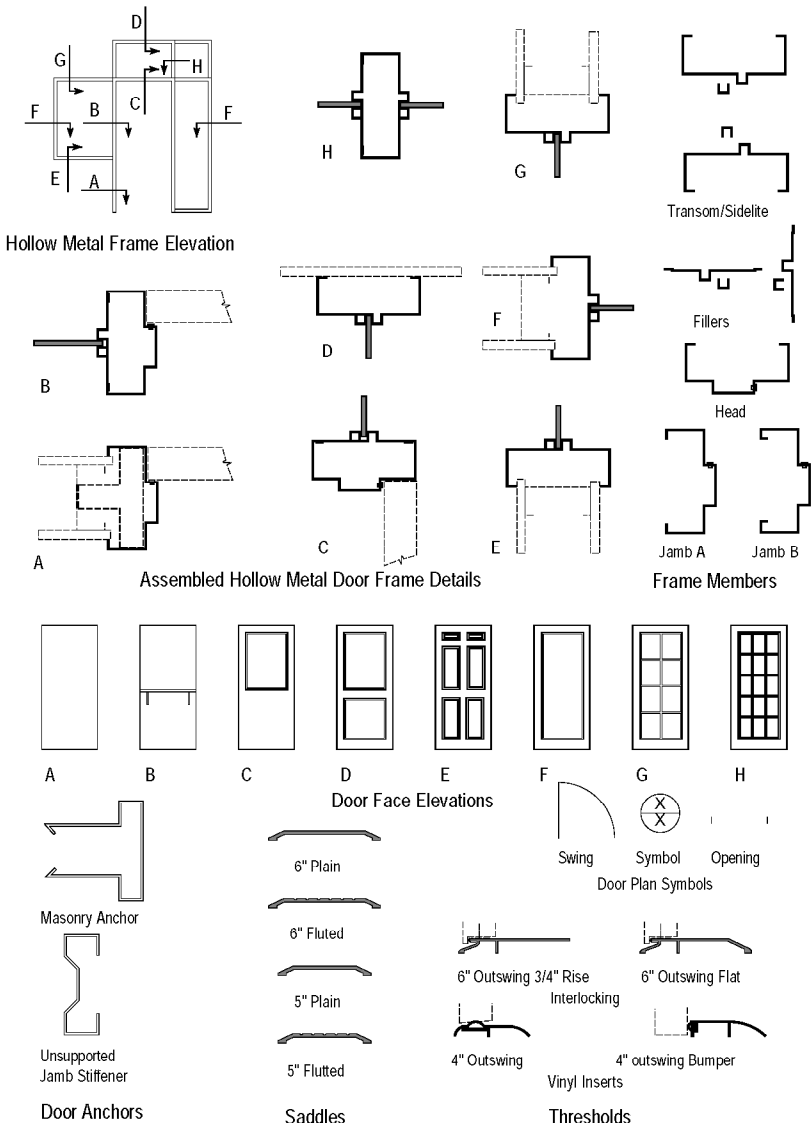
Note:

Clay & Concrete Tile, Metal And Other Roofing Materials Require Flashing And Details Which Are Specific To The Individual Manufacturers Requirements And Go Beyond The Purposes Of This Library

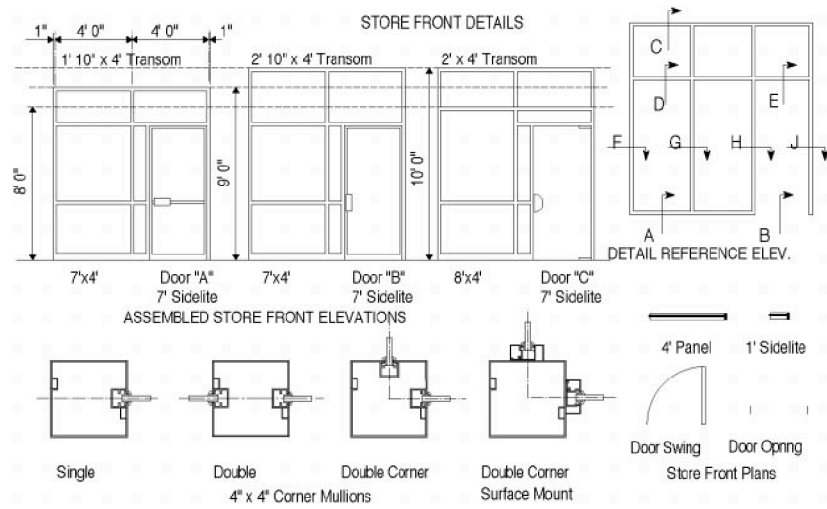


Gutter Shapes

Hollow Metal Doors Library

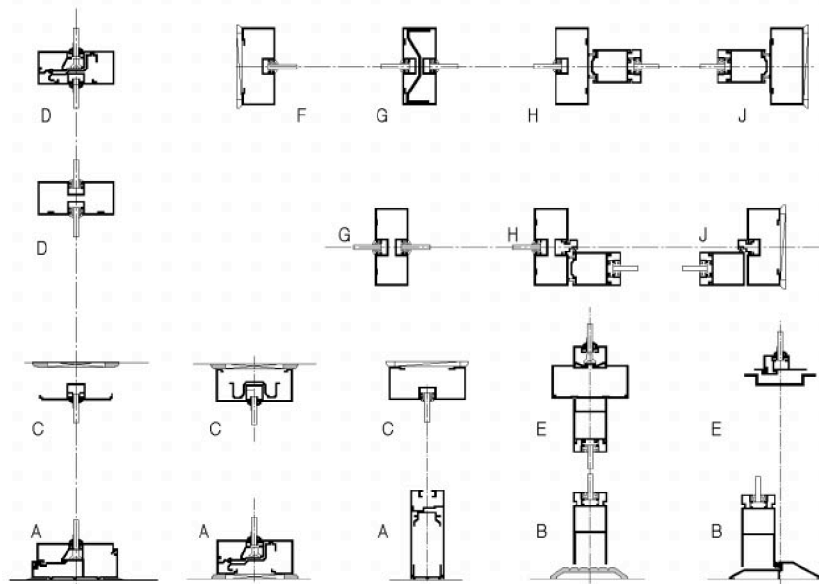


Store Fronts Library

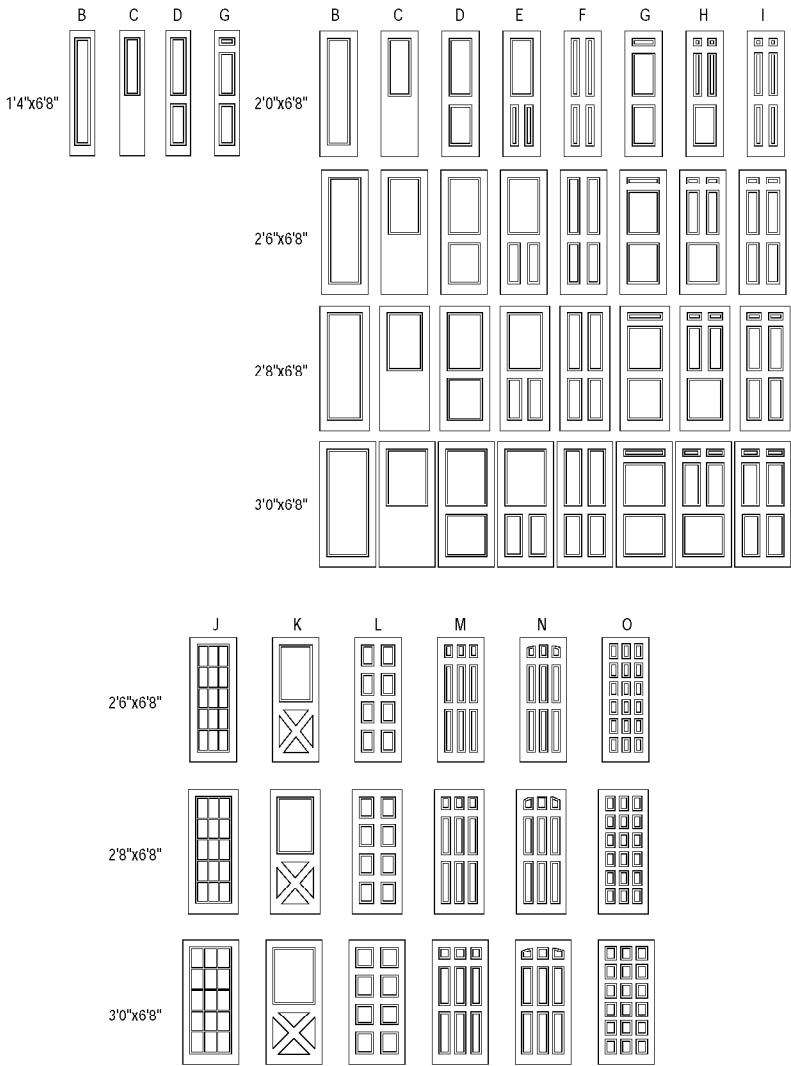


Store Front Details For 1 3/4" X 4" Extruded Sections With Hidden Stops

Store Fronts Library (continued)

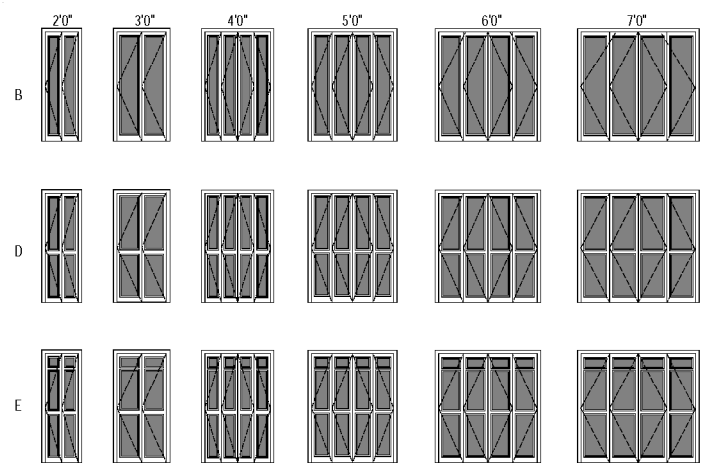


Door Elevations 1'4"-2'6" Library and Door Elevations 2'6"-3'0" Library

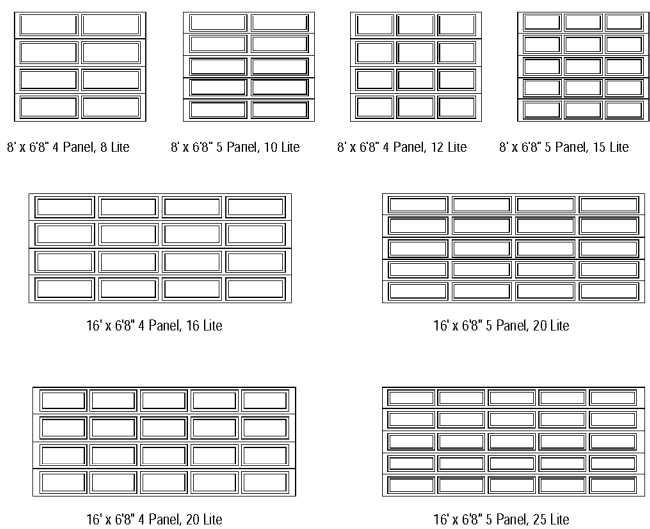


INTERIOR AND EXTERIOR DOOR FACES

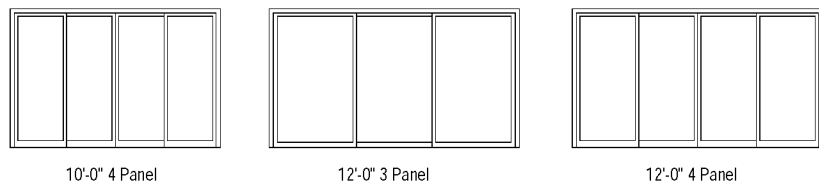
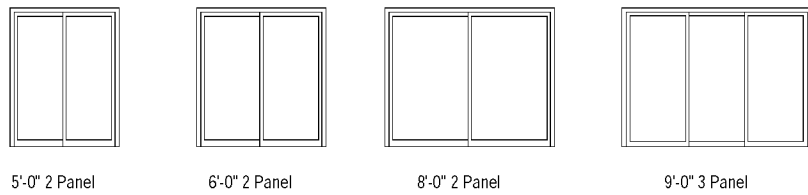
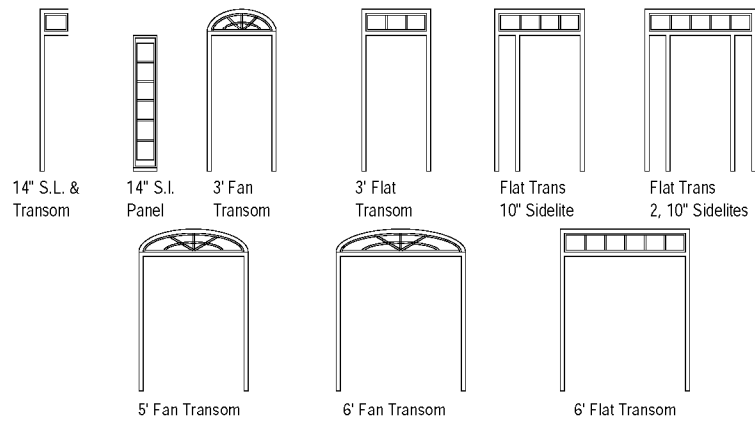
Bifold Doors Library



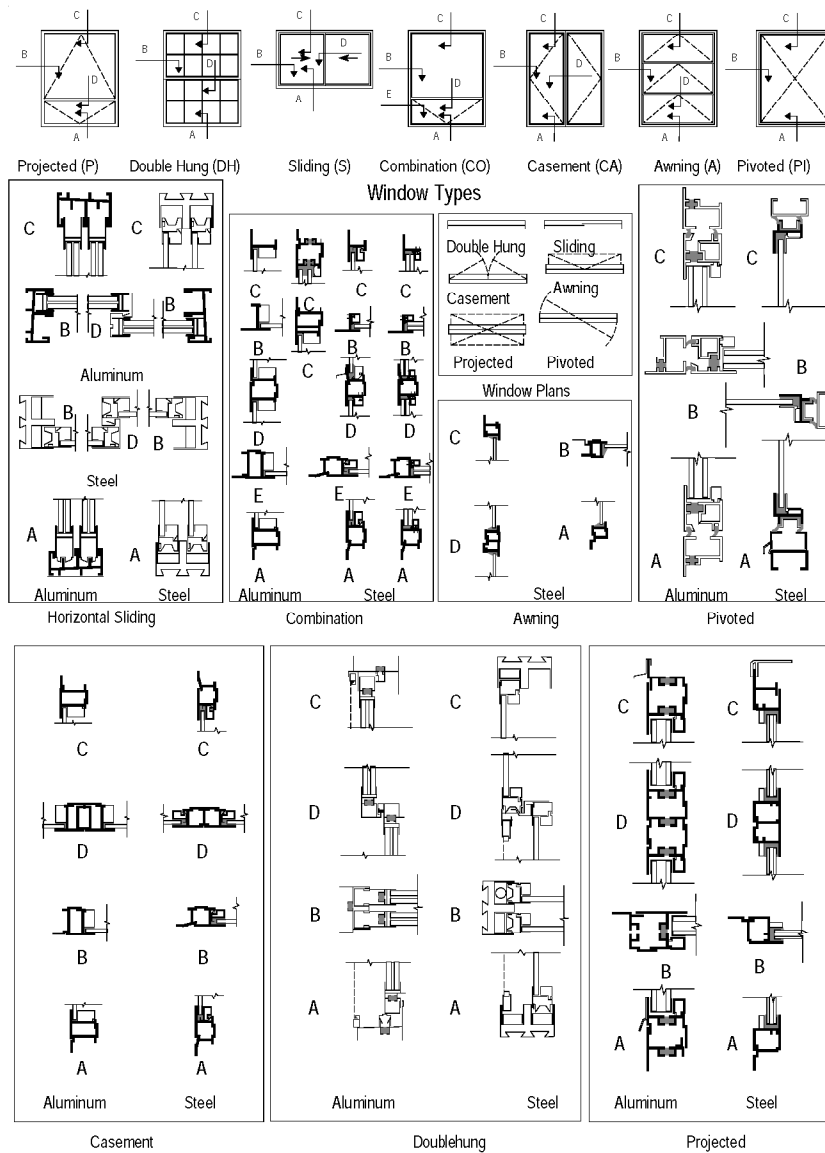
Garage Door Elevations Library



Transoms, Sidelights, and Sliding Glass Doors Library



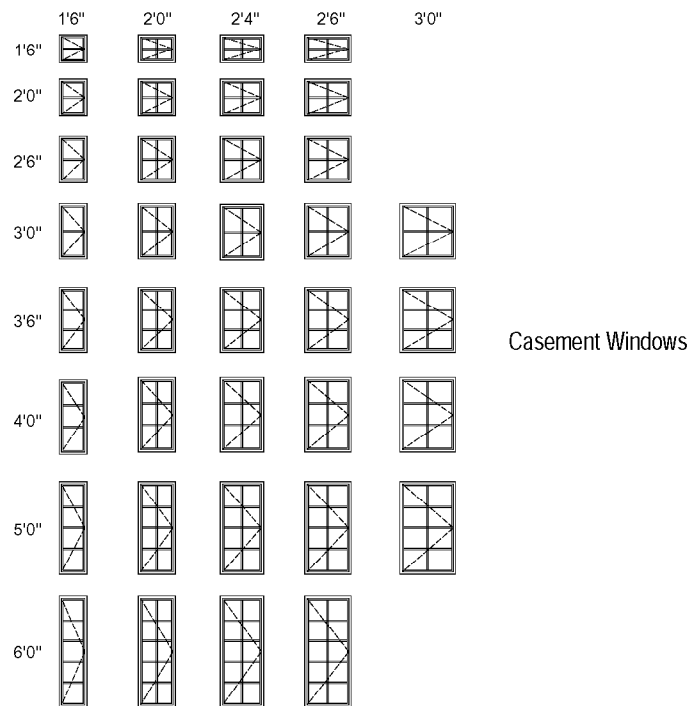
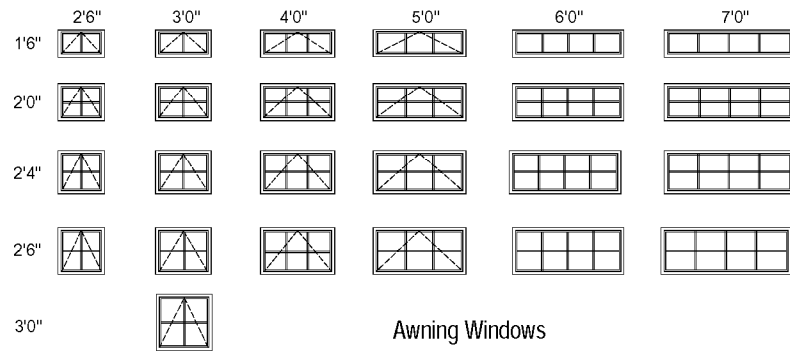
Window Details Library



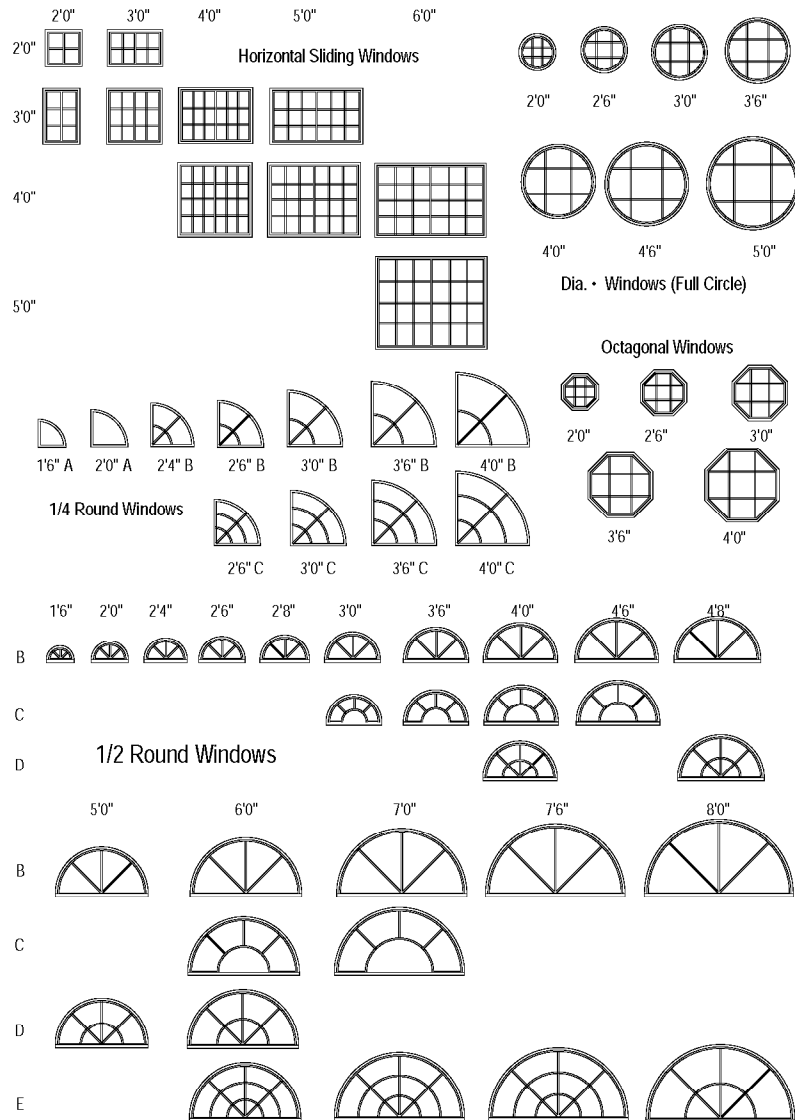
Double-Hung Window Library

	2'-0"	2'-6"	3'-0"	3'-6"	4'-0"
3'-1"					
3'-7"					
4'-1"					
4'-7"					
5'-1"					
5'-7"					
6'-1"					

Awning Window Library and Casement Window Library

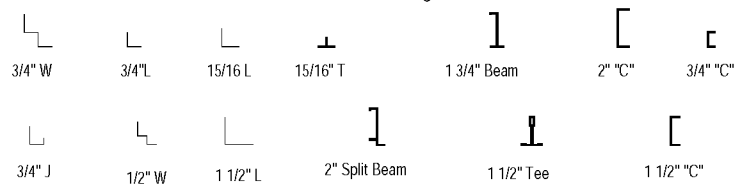


Horizontal Sliding Window Library and Shaped Window Library

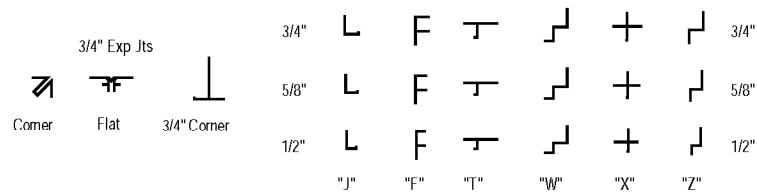


Finishes Library

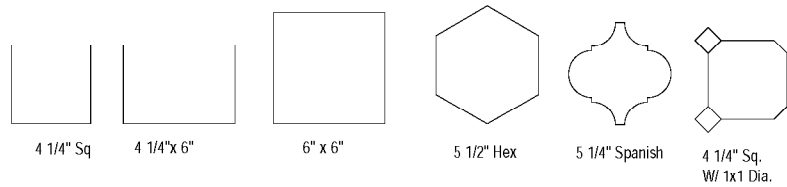
Acoustic Tile Moldings & Trim



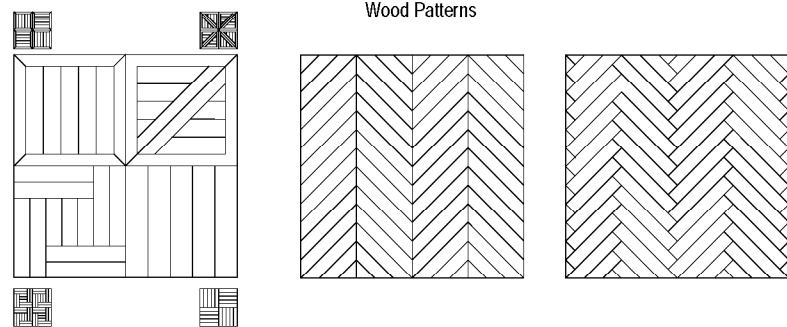
Drywall Stucco & Plaster Moldings & Trim



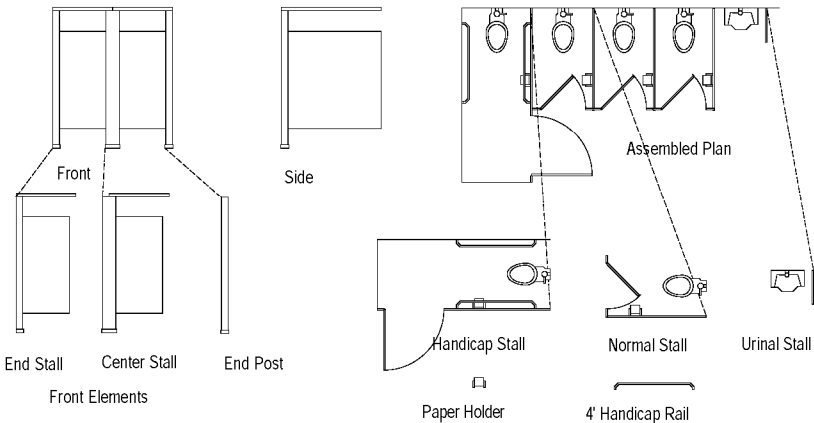
Tile Patterns



Wood Patterns

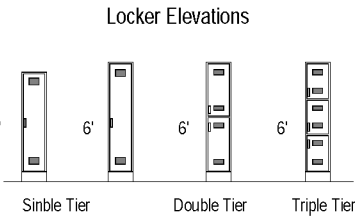
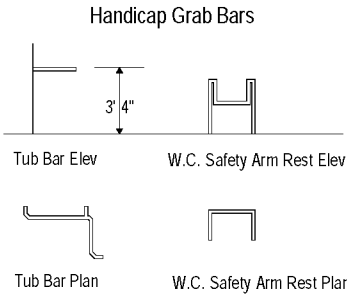


Specialties Library



Water Closet Partition Elevations

Water Closet Partition Plans



Equipment Library



24" Range 30" Range 30" Vented Range 30" built in Cook Top

RANGE TOP PLANS



Plan Plan



Elevation

STACK WASHER/DRYER



Plan

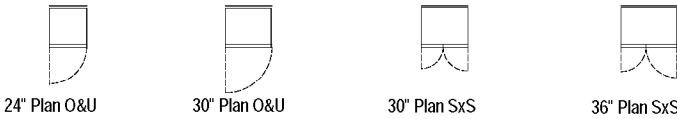


Elevation

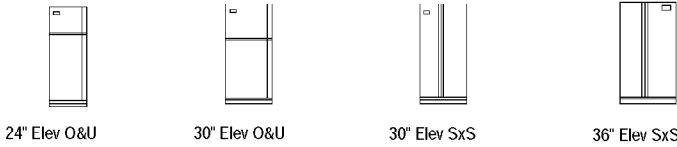
WASHER/DRYER



DISHWASHER



24" Plan O&U 30" Plan O&U 30" Plan SxS 36" Plan SxS

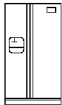


24" Elev O&U 30" Elev O&U 30" Elev SxS 36" Elev SxS

REFRIGERATORS

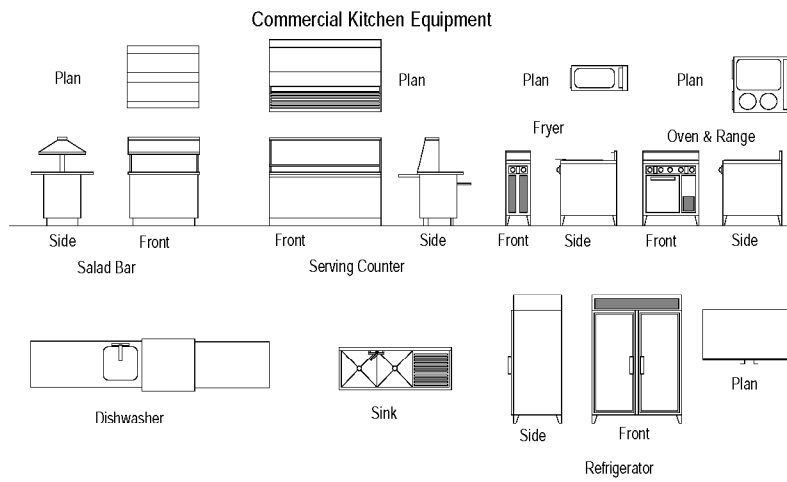
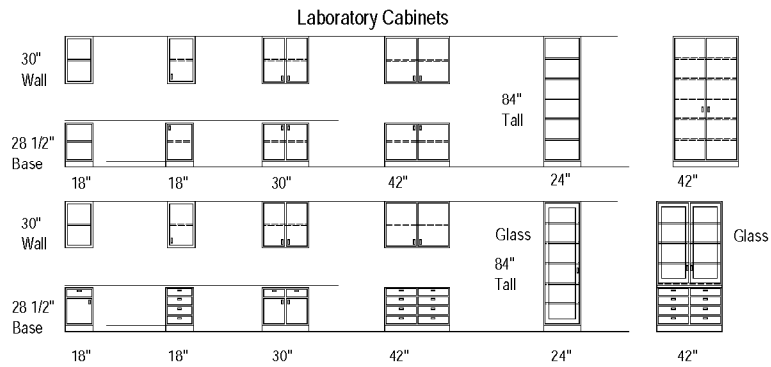
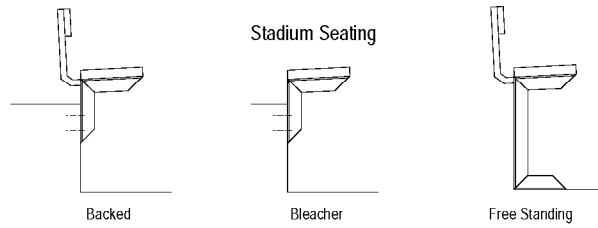


30" Elev SxS
w/Ice Door

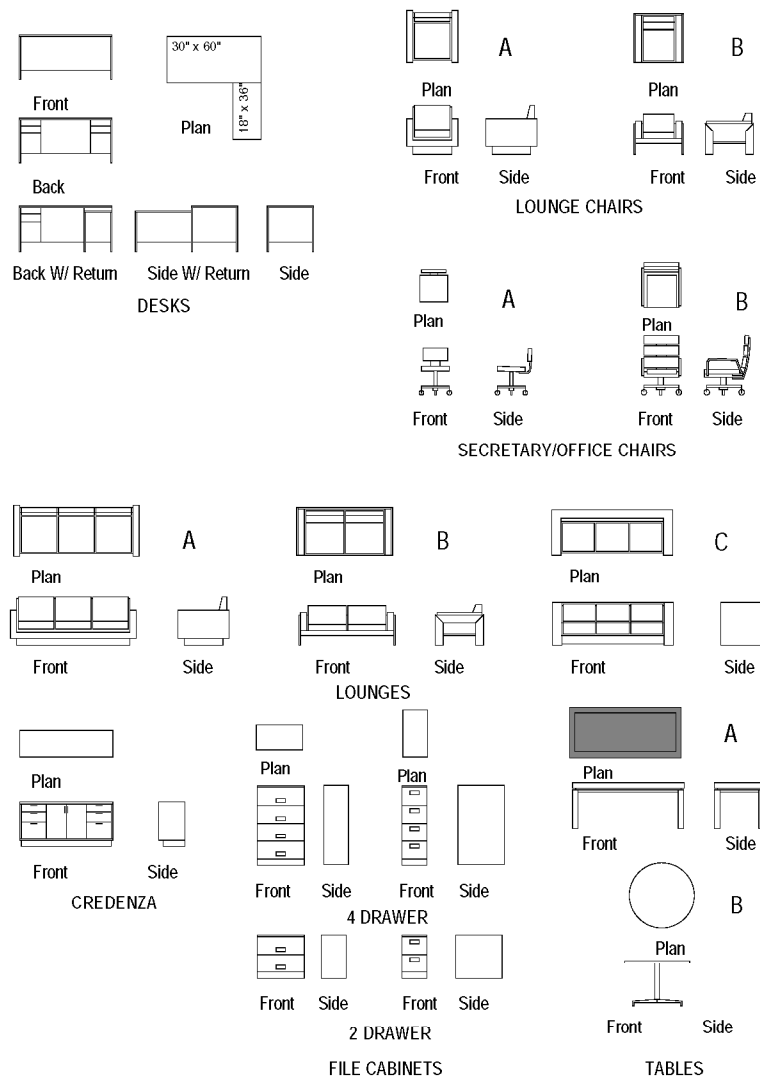


36" Elev SxS
w/Ice Door

Equipment Library (continued)



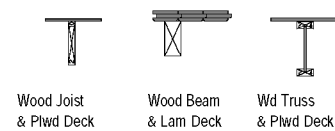
Furnishings Library



Special Construction Library

Block In Wall	
Brick In Wall	
Insulated Stud Wall	
Vinyl Tile	
Quarry Tile	
Glazed Tile	

Plan Symbols



Wood Joist
& Plwd Deck

Wood Beam
& Lam Deck

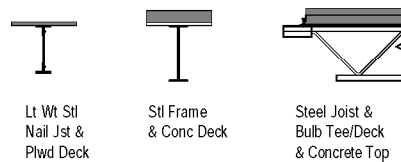
Wd Truss
& Plwd Deck



Steel Jst &
Wood Deck

Steel Jst &
Conc Deck

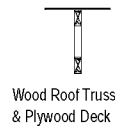
Steel Jst &
Gyp Plank



Lt Wt Stl
Nail Jst &
Plwd Deck

Stl Frame
& Conc Deck

Steel Joist &
Bulb Tee/Deck
& Concrete Top



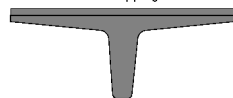
Wood Roof Truss
& Plywood Deck

Note:
Many Roof Assemblies Are
Similar To Floor Assemblies
Except That The Structural
Members Are Lighter.

Roof Assemblies



Precast Hollow Concrete Planks
W/ Concrete Topping



Precast Concrete Tees
W/ Concrete Topping
Floor Assemblies



Concrete, Rgd
Insul & Plaster



Siding, Rgd Insul
Insul. & Gyp Bd.



15" Th. Brick,
Rgd. Insul & CMU
Exterior Wall Assemblies

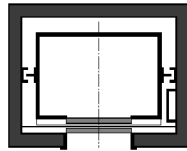


Brick, Rgd Insul
Insul, Studs &
Gyp Board
Exterior Wall Assemblies

Interrupted Wood Blocking	
Framing Lumber	
Finish Wood	
Plywood	
Steel	
Rigid Insulation	
Insulation	
Gypsum Board	
Concrete	
Sand	
Mortar	
Concrete Block	
Brick	
Acoustic Tile	

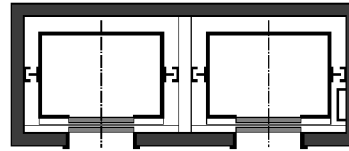
Detail Symbols

Conveying Systems Library



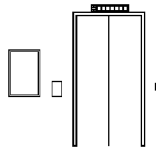
Minimum Lobby Depth

SINGLE 3000 # ELEVATOR PLAN

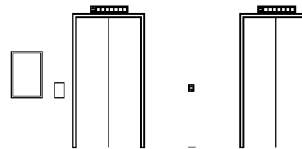


Minimum Lobby Depth

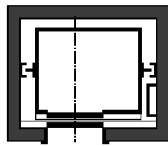
DOUBLE 3000 # ELEVATOR PLAN



SINGLE 3000# ELEVATOR
LOBBY ELEVATION

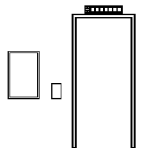


DOUBLE 3000# ELEVATOR
LOBBY ELEVATION



Minimum Lobby Depth

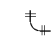
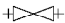
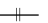
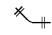

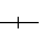
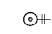

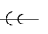
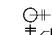

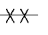
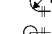

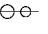
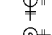

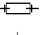
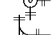





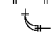
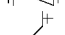
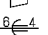
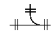
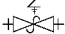
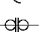

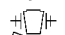

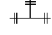
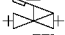
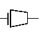
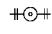

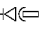
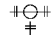

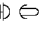


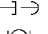

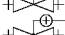
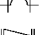
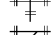

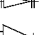


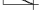



SINGLE 2000 # ELEVATOR PLAN



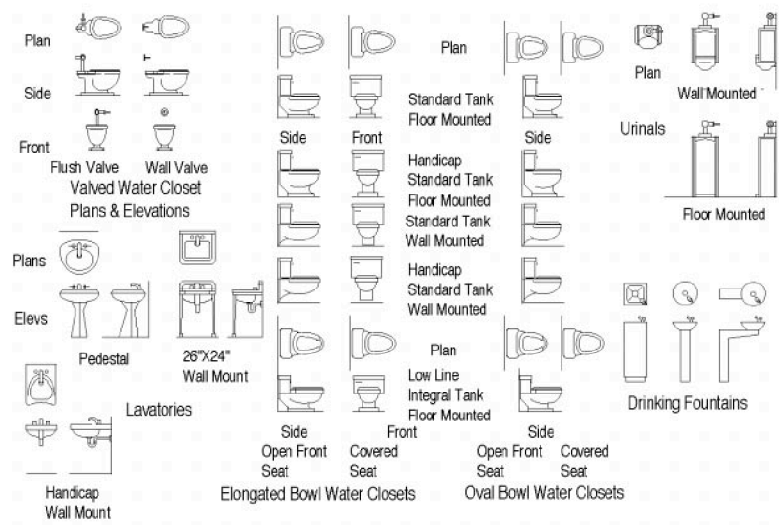
SINGLE 2000# ELEVATOR
LOBBY ELEVATION

Note:
Elevator plans & details vary with each manufacturer. These symbols indicate approximate sizes for the suggested loadings for design layout only. Verify all dimensions and code requirements prior to beginning construction documents.

Plumbing Library - Pipes

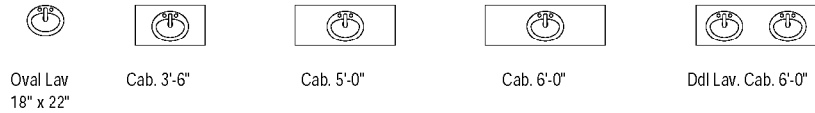
	Elbow - 90°		Gate		Flanged Joint
	Elbow - 45°		Globe		Screwed Joint
	Elbow- Turned Up		Hose Gate		Bell & Spigot Joint
	Elbow - Turned Down		Hose Globe		Weld Joint
	Elbow - Long Radius		Angle Gate Elev		Solder Joint
	Elbow - Side Outlet Down		Angle Gate Plan		Expansion Joint
	Elbow - Side Outlet Up		Angle Globe Elev		Union
	Base Elbow		Angle Globe Plan		Sleeve
	Double Branch Elbow		Check		Screwed Bushing
	Reducing Elbow		Single Check		Bell & Spigot Bushing
	Single Sweep Tee		Safety		Solder Bushing
	Double Sweep Tee		Cock		Weld Bushing
	Straight Tee		Quick Open		Reducing Flange
	Tee Outlet Up		Float		Pipe Plugs
	Tee Outlet Down		Motor Operated Gate		Bull Plugs
	Tee Side Outlet Up		Motor Operated Globe		Caps
	Tee Side Outlet Down		Diaphragm		Crossover
	Straight Cross		Auto Bypass		Concentric Reducer
	Lateral		Auto Governor		Eccentric Reducer

Plumbing Library - Fixtures

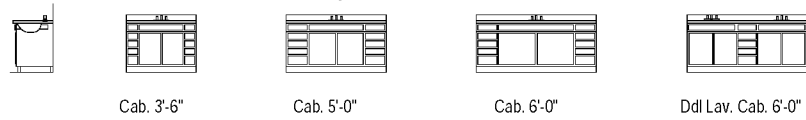


Plumbing Library - Fixtures (continued)

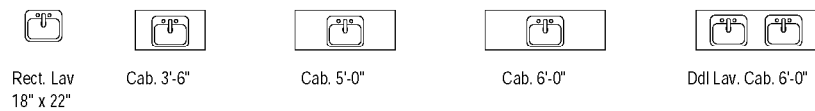
Oval Lavatory Cabinets Plans



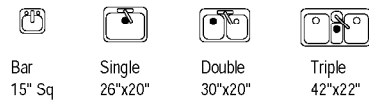
Lavatory Cabinet Elevations



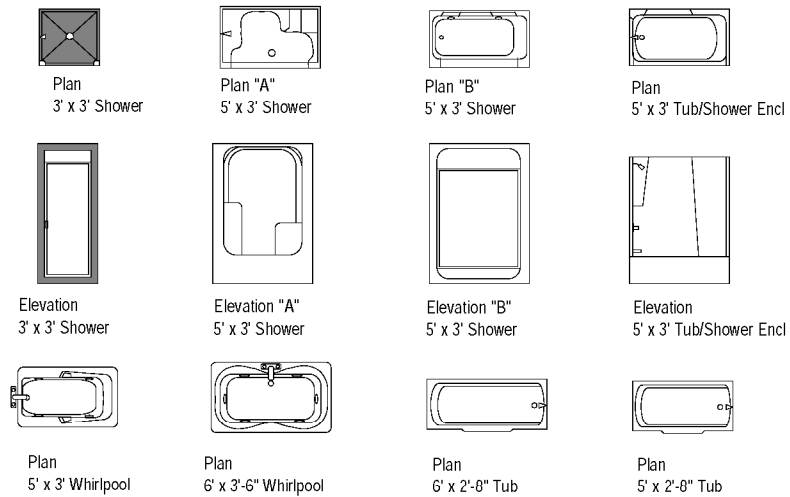
Rectangular Lavatory Cabinets Plans



Sinks



Tubs And Showers



Electrical Library

A Lighting Symbols

	Ceiling Mounted Incandescent Fixture Type
	Wall Mounted Incandescent Fixture Type
	Ceiling Recessed Incandescent Fixture Type
	Wall Recessed Incandescent Fixture Type
	Blank Ceiling Fixture Outlet
	Blank Wall Fixture Outlet
	Ducted Ceiling Fan
	Ducted Wall Fan
	Recirculating Fan
	Recirculating Wall Fan
	Ceiling Junction Box
	Wall Junction Box
	Lamped Ceiling Mounted Pull Chain
	Lamped Wall Mounted Pull Chain
	Low Voltage Ceiling Fixture Type
	Low Voltage Wall Fixture Type
	Pendant Or Ceiling Mount Fluorescent Fixture Type
	Recessed Fluorescent Fixture Type
	Wall Mounted Fluorescent Fixture Type
	Wall Recessed Fluorescent Fixture Type
	Ceiling Fan 3'4"

B Receptacle Symbols

	Single Outlet
	Duplex Outlet
	Duplex Outlet Weather Proof Triple Outlet
	Fourplex Outlet
	Switched Duplex Outlet
	Switched Triplex Outlet
	Special Single Outlet
	Special Duplex Outlet
	220 Volt Outlet
	Single Purpose Outlet (Connect To) Clock Outlet
	Fan Outlet
	Single Floor Outlet
	Duplex Floor Outlet
	Floor Outlet Special Purpose
	Floor Outlet Private Telephone

C Residential & Commercial Switch Symbols

	Single Pole Switch
	Double Pole Switch
	Three Way Switch
	Four Way Switch
	Double Gang Switch
	Four Gang Switch
	Special Purpose Switch L = Low Voltage Lm = Low Voltage Master K = Key Operated D = Automatic Door P = Switch & Night Lamp Cb = Circuit Breaker Wcb = Weather Proof Cb Rc = Remote Control Wp = Weather Proof F = Fused Wf = Weather Proof Fused T = Time Switch
	Ceiling Pull Switch
	Single Outlet & Switch
	Duplex Outlet & Switch

Electrical Library (continued)

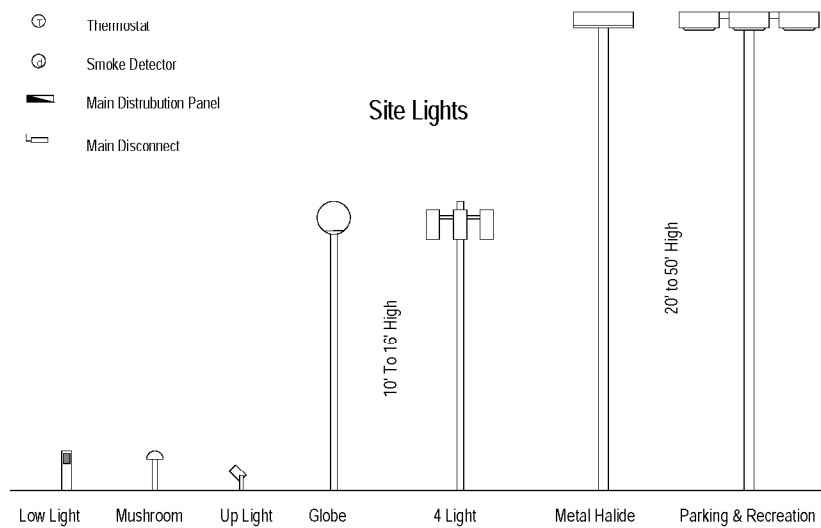
D Signal Devices Symbols

	Push Button
	Buzzer
	Bell
	Bell & Buzzer
	Annunciator
	Telephone
	Interconnected Phone
	Phone Switchboard
	Transformer
	Door Opener
	Maid's Signal
	Radio Outlet
	Chime
	Television Outlet
	Thermostat
	Smoke Detector
	Main Distribution Panel
	Main Disconnect

E Exterior Overhead Symbols

	Pole
	Street Light & Bracket
	Transformer
	Primary Circuit
	Secondary Circuit
	Down Guy
	Head Guy
	Sidewalk Guy
	Service Weather

Note:
A = Lighting Symbol
B = Receptacle Symbol
C = Switch Symbol
D = Residential Signal Device
E = Exterior Overhead Symbol



Note about the Quick Plans and Quick Elevations Libraries

The Quick Plans and Quick Elevations libraries offer a selection of symbols from all 16 sections of the architectural specification format. You can use these files as seed libraries, adding and deleting items as you learn which kinds of symbols you need most often.